


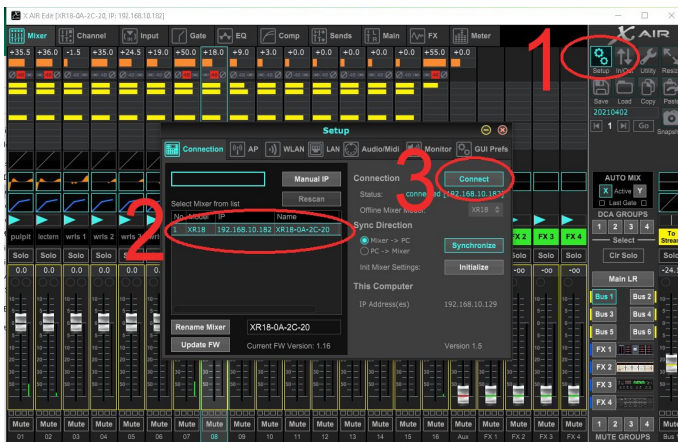
Behringer Mixer App 'X-AIR Edit' Instructions

Double click the 'X-AIR Edit' Icon to open the program . If it is not on your desktop, it will be located in the '_STREAM COMPONENTS' folder in 'My Documents'.

Once app opens, a window may pop up asking you to connect to your mixer. If so, click 'connect' and then 'Mixer -> PC'

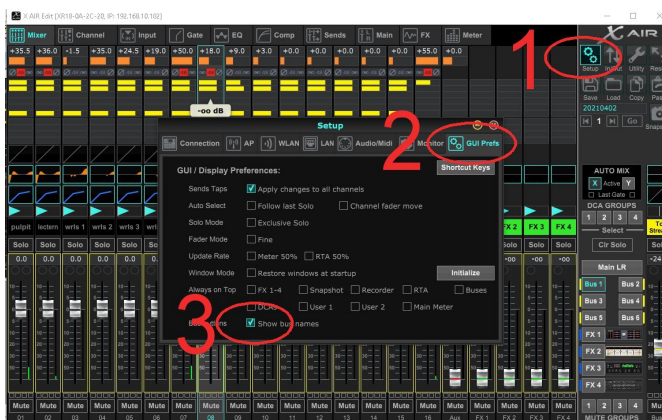
If the mentioned window did not pop up:

- 1) click 'setup' near top right (gear icon)
- 2) in the pop up window, toward the left and middle, click to highlight your mixer's ip address (looks like 'XR12 192.168.X.X')
- 3) in the same window near top right click 'connect'
- 4) on the 'Synchronize' popup click 'Mixer -> PC'



At this point the app will sync with your mixer and you are able to actively control your sound system.

To make things easier, click the setup (double gear) icon again, then at the top right of the pop up click 'GUI Prefs', and check the very bottom box for 'Show bus names'. This will reveal the assignments of the buses in the next step. This setting will be remembered so it only need be done the first time you run the app.





Close the 'setup' popup if still visible. On the right about 2/3 the way down you will notice a larger rectangle above two columns of smaller rectangle buttons. The larger at the top will most likely say 'Main LR' or 'Church' and the others will be labeled for various purposes. If 'Main LR' is highlighted, then adjustments you make to the channels faders (the sliders below each channel name) will affect that channel's volume to both the church and to the live stream. However, if you highlight the smaller rectangle labeled 'Stream' or 'Record' or similar, you may notice some of the fader positions change, and now you can adjust each channel's volume to the live stream independently of its volume in the church.

In this manner you can favor or reduce sources independently such that the live stream audio more correctly matches the 'in church' sound.

Of note, if your church has a microphone channel labeled 'Ambient', this is a special case where we still need the its fader up on the 'Main LR' tab, typically about 70% high (near the '0' label) even though the sound of it does not broadcast into the church.

If you make a mistake or for whatever reason wish to start over, you can use the load icon near top right to load a default scene (one that was programmed by us at installation) from your computer's hard drive. Simply click 'load, load scene' and it will open a browser window containing the file. You are free of course to save variants and load and save at will for comparison.

If a scene wasn't saved to your hard drive you can alternatively click the snapshot icon (looks like a camera below and to the right of the Load icon), highlight a snapshot (typically #1 will be labeled with a 'd' or 'def' for default), and then click 'load' (below the list) and confirm. Snapshots and Scenes are virtually the same; scenes live on your hard drive while snapshots live on the mixer itself. Saving and recalling either has the same effect.